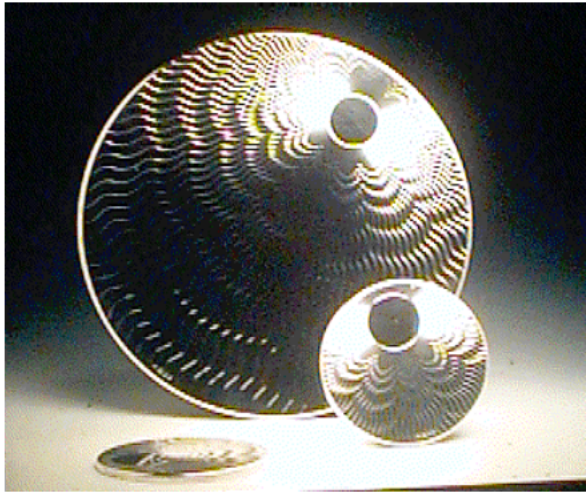
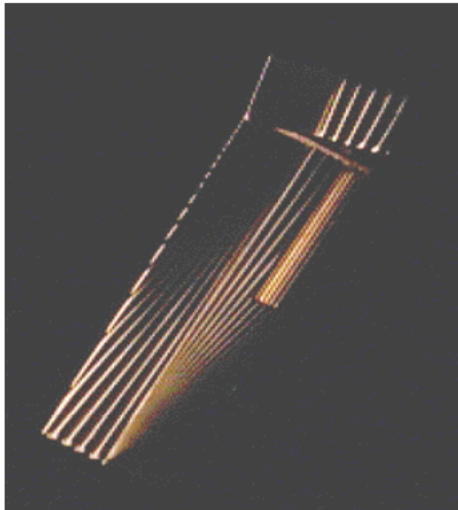


10. *The Design Medium for Metal*

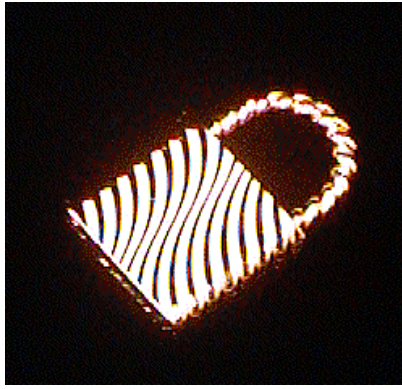
Some Design Examples



Part of a set of Coasters in silver



18ct Lighter with double sunray design



18ct Padlock engine turned with deep gently curving spiral waves which follow around the edges The same principle applied to a different shape with a different pattern design



A .38 special with a handle in the shape of a Falcon set with diamonds



Most of the engine turning on this gun was done on the steel body which was then blued in a kiln by heating very carefully Some of the gold parts, in particular along the top of the barrel were also engine turned The pattern on the steel was to represent feathers